

## Company Profile

Company Name Imahashi Co., Ltd.  
 Address 20-42 Juocho Ishi, Hitachi, Ibaraki ,Japan (Inside the Ishi Industrial Complex)  
 TEL +81-294-39-1161 FAX +81-294-39-1162

Representative President Masamori Imahashi  
 Established July 1964  
 Premises Land 3,900 m<sup>2</sup> Buildings 1,600 m<sup>2</sup>  
 Banks of Account Jyoy Bank Juo Branch, Ibaraki Ken Shinyo Kumiai Hitachi Branch  
 Major Clients 50 companies including Hitachi Power Systems Company and Hitachi Group companies  
 Industries: Power generators, turbines, nuclear power, wind power, semiconductor fabrication equipment, medical equipment, automobile racing (development), defense, construction machinery, universities, research institutions, etc.

Major Business Activities Cutting machining of various products in small lots  
 "Machining of difficult-to-machine shapes, machining of difficult-to-cut materials, precision aluminum machining, welding, casting, plate machining"



## Facility Information

| Type   | Manufacturer | Specifications          | Type  | Manufacturer    | Specifications                  |
|--|--------------|-------------------------|---|-----------------|---------------------------------|
| Vertical machining center                    | OKUMA        | 1200x610x650            | 2D CAD  | AutoCAD         |                                 |
| Vertical machining center                    | MAZAK        | 3200x1400x508           | 3D CAD  | SolidWorks      |                                 |
| Vertical machining center                    | MAZAK        | 2000x1400x508           | 3D CAM  | One-CNC         |                                 |
| Vertical machining center                    | MAZAK        | 2000x1400x508           | 3D CAM  | SURFCAM         |                                 |
| Vertical machining center                    | MAZAK        | 1500x800x585            | NC lathe  | Okuma           | Up to φ300                      |
| Vertical machining center                    | MAZAK        | 1660x440x510            | Face lathe  | Fujii           | Up to φ1200                     |
| Vertical machining center                    | MAZAK        | 1000x508x460            | General purpose lathe,<br>general purpose milling machine |                 |                                 |
| Vertical machining center                    | MAZAK        | 1000x508x460            |   |                 |                                 |
| Vertical machining center                    | MAZAK        | 1500x810x750            | Bandsaw   | Daito Seiki     | Capacity: 650x350φ450 angle 410 |
| Horizontal machining center                  | MAZAK        | 1100x1070x1050 2pallets | Hoist   |                 | 2.8t: 2 units 1.0t: 2 units     |
| Horizontal machining center                  | MAZAK        | 710x650x650 2pallets    | 3D measurement device                                     | Mitsutoyo       | Crysat-PlusM574 500x700x400     |
| Horizontal machining center                  | MAZAK        | 610x508x460 6pallets    | Micrometer (0-500)  | Mitsutoyo, etc. | ISO9001 compliant               |
| Simultaneous 5 axis control machining center | MAZAK        | 730x850x560             | Calipers (0-1000)   | Mitsutoyo, etc. | ISO9001 compliant               |
|  |              |                         | Height gauge  | Mitsutoyo, etc. | ISO9001 compliant               |
| 5 axis control machining center              | MAZAK        | 350x550x510             | Cylinder gauge  | Mitsutoyo, etc. | ISO9001 compliant               |
|  |              |                         | Thread gauge  | OSG             | ISO9001 compliant               |

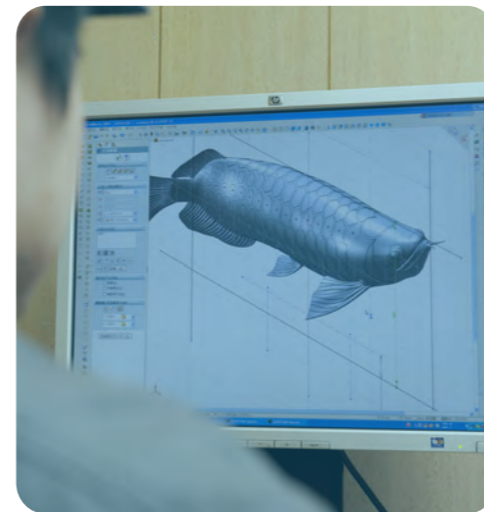


A machining studio challenging "Machining of difficult-to-machine shapes", "Machining of difficult-to-cut materials" and "Precision aluminum machining"

20-42 Juocho Ishi, Hitachi, Ibaraki ,Japan (Inside the Ishi Industrial Complex)  
 TEL: +81-294-39-1161 FAX: +81-294-39-1162  
 URL www.imahashi-ss.jp Email ims@imahashi-ss.jp



ISO 9001:2008  
 JQA-QMA 13542



A machining studio challenging "Machining of difficult-to-machine shapes", "Machining of difficult-to-cut materials" and "Precision aluminum machining"





# Imahashi Seisakusyo provides "added value<sup>+α</sup>" for metal cutting work.

## Depend on us for complex and 3D shapes! <sup>+α</sup>



### ▶ Machining of difficult-to-machine shapes

Our strength shows in small lots of various products in the prototype development field in particular, including thin-walled shapes and those which have 3D shapes and free-form curves.

- 3D-CAD modeling capabilities.
- Creation of tool paths that take full advantage of shape characteristics.
- We use our technical capabilities built over dozens of years as a specialist in machining center small lot machining, allowing our company to handle "machining of difficult-to-machine shapes" that other companies in the industry are unable to duplicate.

### ▶ Difficult-to-machine shape examples

Subject: Aluminum mask

Size: 150×150×300[mm]

Material: A5052

Features: The mask thickness is 0.5mm or less overall and the entire structure is machined with no welding. A high degree of technical capability was required for all steps including (1) simultaneous 5 axis machining center machining, (2) 3D CAD/CAM design and (3) fixation methods.



## Depend on us for difficult-to-cut materials as well! <sup>+α</sup>

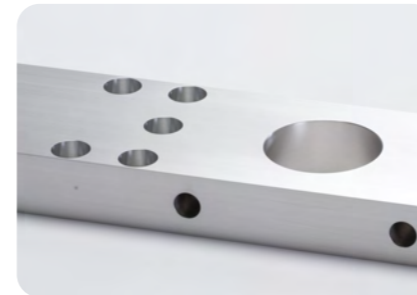
### ▶ Machining of difficult-to-cut materials

We have proven track records in a variety of fields including iconel, hastelloy and other heat resistant alloys in mainly the nuclear power field, titanium and other alloys in the car racing field and medical equipment field, and fiberglass in the defense field. Machining of difficult-to-machine shapes and difficult-to-cut materials are both areas where we excel and show our true strengths.

◀ The materials for the leaves are iconel and titanium and are fully machined at an overall thickness of 0.5mm or less.



## Reduce aluminum scratches as many as possible. <sup>+α</sup>



### ▶ Precision aluminum machining

Dents and scratches in aluminum products cause a lot of distress. Our company has a long proven track record with semiconductor manufacturing equipment aluminum machining, and we handle aluminum products with the utmost care to prevent surface scratches and other defects. Our use of specialized custom tools and deburring equipment, and meticulous care through every step of the process including cleaning methods and waste cloth management, allows us to realize machining **free of scratches and chatter marks** that has been highly praised for many years.

## We can provide full services including welding, casting and surface treatment! <sup>+α</sup>

### ▶ Welding, casting, surface treatment package orders

When welded products are machined, heat strain causes a major problem. It's well known that **less the strain is**, the easier machining is. We do not only handle welding in whatever materials are provided, but we also can handle package orders requiring a high level of technical capability through collaboration with Hitachi certified plant welding contractors. We can also handle casting and surface treatment (alumite, electroless, chromate, etc.) services.



## Tight deadlines? No problem! <sup>+α</sup>

### ▶ Ultra express delivery service!

Approximately 60% of our orders are delivered within 1 week.

When you "need urgent on-site assembly" or "want products immediately", feel confident in placing your order with our company to benefit from our full lineup of vertical, horizontal, 5 axis machining, NC lathe, surface grinding and other equipment. Same-day shipping: Availability depends on materials used, but we are usually able to handle SS, A5052 and SUS304 same-day shipping. For example, for a project requiring a machining time of 5 hours, we can provide same-day delivery for orders received up to 12 noon (domestic).

|  | Same-day AM                          | Same-day PM                               | 1 day 2 days 3 days   |
|--|--------------------------------------|---|---|
| Express delivery products<br>SS,5052,SUS | Order receipt                        | Machining receipt, inspection<br>Shipping | We can directly deliver products to clients within Ibaraki Prefecture and in neighboring areas. |
| Semi-express delivery products           | Order receipt, materials preparation | Machining, inspection                     | Shipping  |